

## Energy-Efficient Lighting Renovation for Unitic Skyscrapers

The Unitic Skyscrapers are a 23-storey mixed-use landmark building in Sarajevo, consisting of office spaces and retail units. During the renovation of the building, the lighting system was identified as an area for phased modernisation.

The key business challenge was to replace the existing lighting infrastructure with an energy-efficient LED solution as part of the refurbishment, with a focus on reducing energy consumption and operational costs in a large, occupied commercial building.



### Key Facts

**Client:** Unitic d.o.o. Skyscrapers

**Partners name:** Spot97 d.o.o. Skyscrapers

**Country:** Sarajevo, Bosnia & Herzegovina

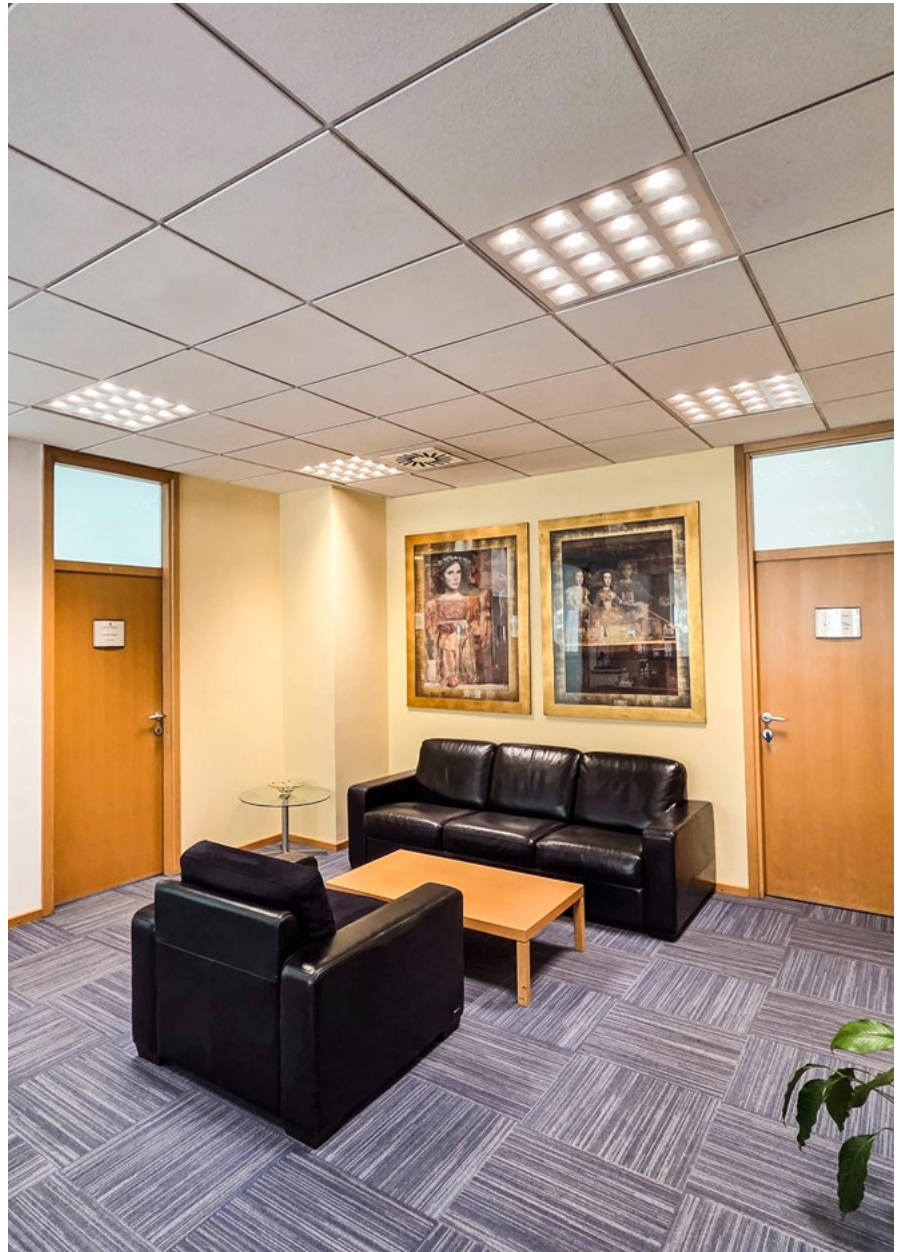
### Key outcome

The Unitic Skyscrapers project was awarded based on a strong existing relationship and trust of investors with local Sylvania partner Spot97 d.o.o. and a good alternative proposed by the Sylvania team. A key deciding factor was the 10-year warranty, which was highly valued by the customer from the very first delivery discussions and ultimately led to Sylvania being selected.



The customer's objective was to achieve a full lighting upgrade that improves efficiency, ensures reliable long-term operation, and supports the overall renovation of the building.

Our design team supported the process by preparing lighting design drawings to ensure proper planning and execution across each phase. The project is being implemented in several phases, it started at the end of 2025, three phases have already been completed, and the continuation will follow in 2026.



The customer response was very positive, particularly from the owner and facility manager, who appreciated the balance between product quality and cost-efficiency.

The Sylvania sales team proposed a good alternative to the existing fixtures and with the help of the design team, confirmed this with the lighting calculations to the satisfaction of users and investors.



### Luminaires installed

- Phase 1: QUADRO 600x600 840 MP  
284 pcs
- Phase 2: QUADRO 600x600 840 MP  
500 pcs
- Phase 3: QUADRO 600x600 840 MP  
850 pcs

**Over 3000 luminaires were installed in the building, providing 10 years extended warranty in phase 1**



[sylvania-group.com](http://sylvania-group.com)

Although every effort has been made to ensure accuracy in the compilation of the technical detail within this publication, specifications and performance data are constantly changing. Current details should therefore be checked with Feilo Sylvania International Group Kft.

Copyright Feilo Sylvania International Group Kft. May 2026

**Digital | Lighting | Solutions**